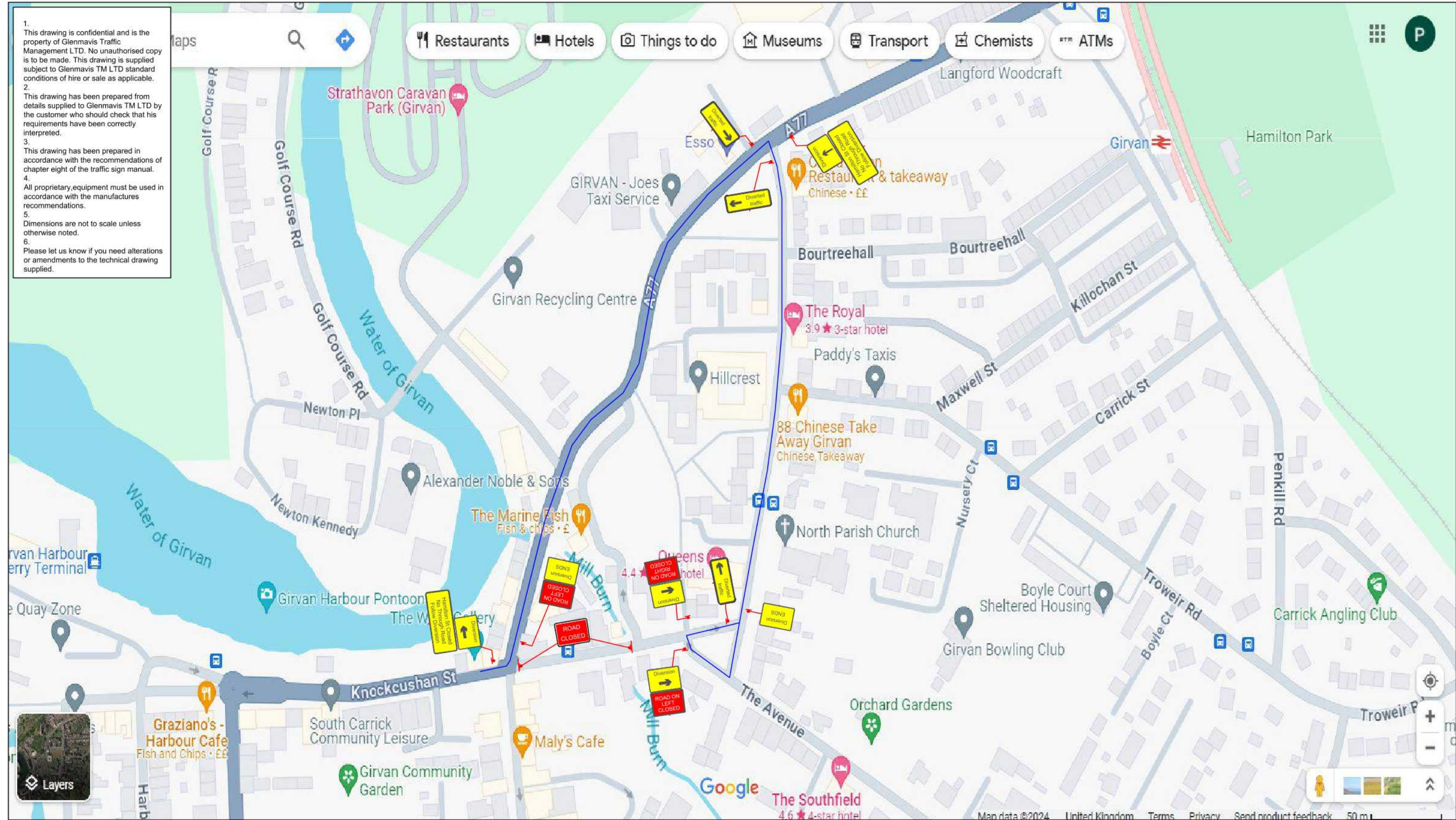


1. This drawing is confidential and is the property of Glenmavis Traffic Management LTD. No unauthorised copy is to be made. This drawing is supplied subject to Glenmavis TM LTD standard conditions of hire or sale as applicable.
2. This drawing has been prepared from details supplied to Glenmavis TM LTD by the customer who should check that his requirements have been correctly interpreted.
3. This drawing has been prepared in accordance with the recommendations of chapter eight of the traffic sign manual.
4. All proprietary equipment must be used in accordance with the manufactures recommendations.
5. Dimensions are not to scale unless otherwise noted.
6. Please let us know if you need alterations or amendments to the technical drawing supplied.



Glenmavis  
Traffic Management  
01294 645564



Customer		
Jamieson Plant Hire	1	08-01-24
	Issue	Date

Location	Hamilton St, Girvan - Road Closure/Diversion
----------	--

Drawn By	Penny Smith
Checked By	AW
Drawing Number	DR1

Job No	TM001336
Revision	

Original drawing size A3 - NTS